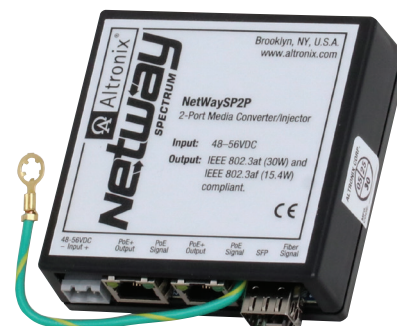


NetWaySP2P

2-Port Media Converter/Injector



Altronix NetWaySP2P media converter/injector converts a single Fiber (1000Base-X/SX/LX) into two (2) Ethernet ports (10/100/1000 Mbps) and provides PoE/PoE+ power to connected devices.



NetWaySP2P

Specifications

Input

48-56VDC @ 1.2A (60W)

Fiber Ports

One (1) 1Gb SFP port

Output Power

Two (2) PoE / PoE+ ports, rated up to 30W max.
IEEE 802.3af and IEEE 802.3at compliant

Ethernet

Connectivity: RJ45, auto-crossover
Wire type: 4-pair CAT5e
Distance: up to 100m
Speed: 10/100/1000 Mbps

Indicators (LED)

Yellow and Green LEDs: IP Link status,
10/100/1000 Base-T/active
Green PoE LEDs: PoE present
Green SFP (Fiber) LEDs: SFP connection

Features

Auto detection and protection of legacy non-PoE cameras/devices
Compact insulated housing
Lifetime Warranty

Agency Listings

CE European Conformity

Physical and Environmental

Dimensions (W x L x H)

Enclosure: 3.375" x 3.8" x 1" (85.7mm x 96.5mm x 25.4mm)
Shipping: 8" x 6" x 5" (203.2mm x 152.4mm x 127mm)

Weight (approx.)

Product: 0.25 lb. (0.11 kg)
Shipping: 0.3 lb. (0.14 kg)

Temperature

Operating (30W): -40°C to 70°C (-40°F to 158°F)
Storage: -40°C to 75°C (-40°F to 167°F)

Relative Humidity: 85% +/- 5%

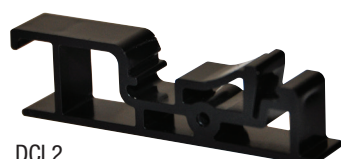
Operating Altitude: -304.8 to 2,000m

Accessories (order separately)



SFP Modules - Hot pluggable Transceivers

P1MM Multi-Mode SFP Module for distances up to 550m
P1SM10 Single-Mode SFP Module for distances up to 10km
P1AB2K Single Strand SFP Module for distances up to 2km
P1GCE Copper SFP Module for distances up to 100m



DCL2

DCL2 - DIN Rail Mounting Clip

Allows for easy installation of Altronix adapters utilizing screw mounting holes to mount on a standard DIN rail (Altronix Din Rail models D10, D12, D19, or D24).

Lifetime Warranty